

# RAR, Double-Acting, Aluminium Cylinders

▼ Shown from left to right: RAR-5010, RAR-308, RAR-204



### Saddles

All RAR-cylinders are equipped with bolt-on removable hardened steel saddles.

For Tilt Saddles see next page.

Page: **19**



### Hoses

Enerpac offers a complete line of high quality hydraulic hoses. To ensure the integrity of your system, specify only Enerpac hydraulic hoses.

Page: **122**

- Double-acting for rapid retraction, regardless of hose lengths or system losses
- Composite bearings increase cylinder life and sideload resistance
- Hard-Coat finish on all surfaces resists damage and extends cylinder life
- Handles included on all models
- Steel base plate and saddle for protection against load-induced damage
- Integral stop ring prevents plunger over-travel and is capable of withstanding the full cylinder capacity
- Built-in safety valve prevents accidental over-pressurization.

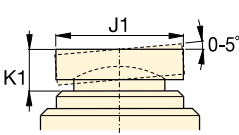
▼ An RAR-506 was easy to position under a bulldozer for repair of frame member.



Cylinder Capacity @ 700 bar ton	Stroke (mm)	Model Number	Max. Cylinder Capacity (kN)		Cylinder Effective Area (cm <sup>2</sup> )		Oil Capacity (cm <sup>3</sup> )	
			Push	Pull	Push	Pull	Push	Pull
20	50	RAR-202	218	130	31,2	18,6	156	93
	100	RAR-204	218	130	31,2	18,6	312	186
	150	RAR-206	218	130	31,2	18,6	468	279
	200	RAR-208	218	130	31,2	18,6	624	372
	250	RAR-2010	218	130	31,2	18,6	780	465
30	50	RAR-302	309	179	44,2	24,5	221	123
	100	RAR-304	309	179	44,2	24,5	442	245
	150	RAR-306	309	179	44,2	24,5	663	368
	200	RAR-308	309	179	44,2	24,5	884	490
	250	RAR-3010	309	179	44,2	24,5	1105	613
50	50	RAR-502	496	187	70,9	26,7	354	134
	100	RAR-504	496	187	70,9	26,7	709	267
	150	RAR-506	496	187	70,9	26,7	1063	401
	200	RAR-508	496	187	70,9	26,7	1417	534
	250	RAR-5010	496	187	70,9	26,7	1771	668
100	50	RAR-1002	1002	557	143,1	79,5	715	398
	100	RAR-1004	1002	557	143,1	79,5	1431	795
	150	RAR-1006	1002	557	143,1	79,5	2147	1193
	200	RAR-1008	1002	557	143,1	79,5	2863	1590
	250	RAR-10010	1002	557	143,1	79,5	3578	1988
150	50	RAR-1502	1589	924	227,0	132,0	1135	660
	100	RAR-1504	1589	924	227,0	132,0	2270	1320
	150	RAR-1506	1589	924	227,0	132,0	3405	1980
	200	RAR-1508	1589	924	227,0	132,0	4540	2640
	250	RAR-15010	1589	924	227,0	132,0	5675	3300

# Double-Acting, Aluminium Cylinders

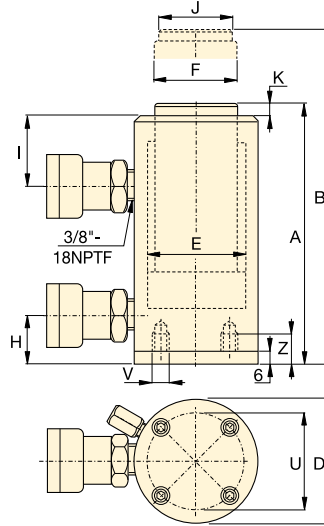
Optional Bolt-on Tilt Saddle Dimensions (mm)			
For Cylinder Model / Capacity ton	Tilt Saddle * Model Number	Tilt Saddle Diameter J1	Saddle Protrusion from Plunger K1
RAR-50	CATG-50	50	24
RAR-100	CATG-100	73	29
RAR-150	CATG-150	91	31



\* Tilt saddles not available for less than 50 ton.

Steel Base Plate Mounting Holes			
Cylinder Model / Capacity ton	Bolt Circle U (mm)	Thread V (mm)	Thread Depth <sup>1)</sup> Z (mm)
RAR-20	93	M6	12
RAR-30	105	M6	12
RAR-50	110	M6	12
RAR-100	165	M6	12
RAR-150	200	M6	12

<sup>1)</sup> Including Base Plate Height of 6 mm and four (4) base plate bolts M6.



## RAR Series



Capacity:  
**20 - 150 ton**

Stroke:  
**50 - 250 mm**

Maximum Operating Pressure:  
**700 bar**

Collapsed Height A (mm)	Extended Height B (mm)	Outside Diameter D (mm)	Cylinder Bore Diameter E (mm)	Plunger Diameter F (mm)	Bottom to Advance Port H (mm)	Top to Retract Port I (mm)	Saddle Diameter J (mm)	Saddle Protrusion from Plunger K (mm)	(kg)	Model Number
189	239	113	63	40	30	50	30	3	7,4	RAR-202
239	339	113	63	40	30	50	30	3	8,0	RAR-204
289	439	113	63	40	30	50	30	3	8,6	RAR-206
339	539	113	63	40	30	50	30	3	9,2	RAR-208
389	639	113	63	40	30	50	30	3	9,8	RAR-2010
201	251	125	75	50	30	55	40	3	8,6	RAR-302
251	351	125	75	50	30	55	40	3	9,5	RAR-304
301	451	125	75	50	30	55	40	3	10,4	RAR-306
351	551	125	75	50	30	55	40	3	11,3	RAR-308
401	651	125	75	50	30	55	40	3	12,2	RAR-3010
201	251	145	95	75	30	56	50	3	11,1	RAR-502
251	351	145	95	75	30	56	50	3	12,7	RAR-504
301	451	145	95	75	30	56	50	3	14,3	RAR-506
351	551	145	95	75	30	56	50	3	15,9	RAR-508
401	651	145	95	75	30	56	50	3	17,5	RAR-5010
251	301	185	135	90	43	80	75	3	16,4	RAR-1002
301	401	185	135	90	43	80	75	3	19,3	RAR-1004
351	501	185	135	90	43	80	75	3	22,2	RAR-1006
401	601	185	135	90	43	80	75	3	25,1	RAR-1008
451	701	185	135	90	43	80	75	3	28,0	RAR-10010
248	298	230	170	110	38	75	113	3	24,2	RAR-1502
298	398	230	170	110	38	75	113	3	28,9	RAR-1504
348	498	230	170	110	38	75	113	3	33,2	RAR-1506
398	598	230	170	110	38	75	113	3	37,9	RAR-1508
448	698	230	170	110	38	75	113	3	42,6	RAR-15010